

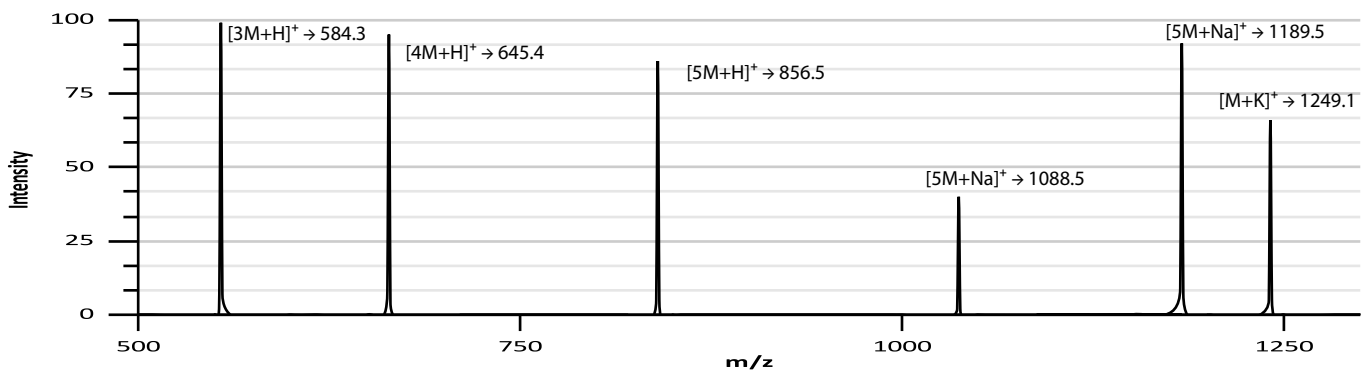
Client	AMNO Co.
Report Date	02/05/2026
Accession Number	451225-2026
Batch Number	25ABF
CAS	See notes
Molecular Formula	See notes
Appearance	White Lyophilized Powder
Molecular weight	Blend
Column	C18, 4.6 × 150 mm, 5 μm
Conformity	Pass
MS Detector	UV (220 nm)
Detector	ESI-MS

• Verify test results at www.trustnomilabs.com/coa-look-up

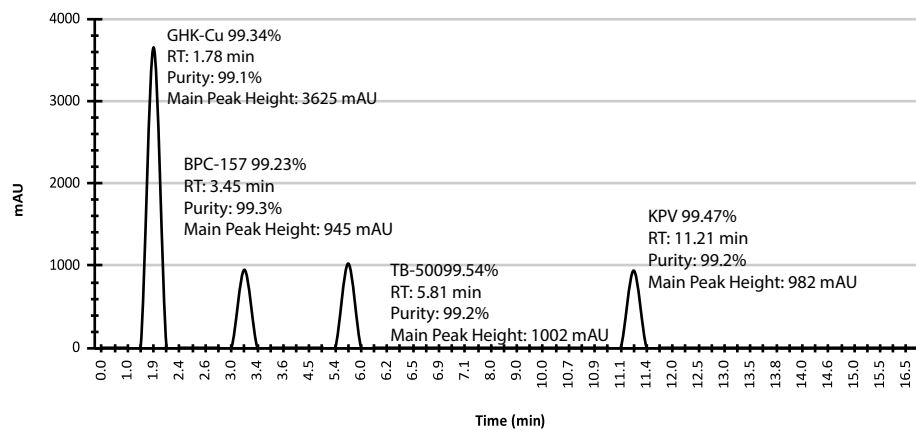
Results

Product	Klow 80mg
Purity	Blend > 99%
Identity	Confirmed via LC-MS
Net Peptide Content	80.142mg
Endotoxins	<0.05 EU/mL (Pass)

Analytical testing was performed via high-performance liquid chromatography (HPLC) with UV detection, coupled to mass spectrometric analysis.



HPLC Chromatogram



Peptide purity analysis was performed using LC-MS/MS under standard laboratory conditions. The results are specific to the sample(s) submitted and are provided for research and informational purposes only. All materials tested are intended strictly for research use and are not approved for human or veterinary use, including diagnostic, therapeutic, or clinical applications. Results should be interpreted by qualified professionals. Analytical outcomes may be influenced by sample integrity, handling, and other experimental variables.

Additional Notes:

BPC-157 (10mg) Cas#137525-51-0
C62H98N16O22

TB-500 (10mg) Cas#77591-33-4
C212H350N56O78S

GHK-Cu (50mg) Cas#89030-95-5
C14H24CuN6O4

KPV (10mg) Cas#67727-97-3
C16H30N4O5



Matt Schenauer

Matt Schenauer | Lead Scientist